

# Expanding Auckland's rapid transit network



## Being connected to people and places improves our lifestyle

Light Rail will dramatically expand Auckland's rapid transit network, which already moves thousands of people, to make Tāmaki Makaurau a better place to live now and in the future.

Auckland Light Rail will help reshape our neighbourhoods to work better for us. It will connect people to work and study, and enable new jobs and homes in growing communities, this means we won't have to rely on cars, helping to reduce emissions.

### Benefits of Light Rail

- Easier to move around our city
- Turn up and go – trains every 5 minutes (or less)
- Enables more homes in growing suburbs instead of the city edges
- 97,000 extra jobs and 66,000 new homes by 2051
- Fewer journeys by car will help reduce emissions
- Stimulates quality investment in mixed-use neighbourhoods

## A foundation for growth

Building Auckland Light Rail will unlock wider plans to help connect hundreds of thousands of Aucklanders. It will start with light rail from the City Centre to Māngere and integrate with the Waitematā Harbour Connections project which is planning multi-modal transport options across the Waitematā Harbour. Light rail will also be extended to the North West, connecting all the way to Kumeu/Huapai.

By building a tunnel in the city centre now as part of Auckland Light Rail, we are creating a base for future light rail lines, including Waitematā Harbour Connections. This investment will benefit the whole city, saving on future construction costs and disruption.

Light rail will be tunnelled between the city centre and Mt Roskill and run at surface to Māngere.

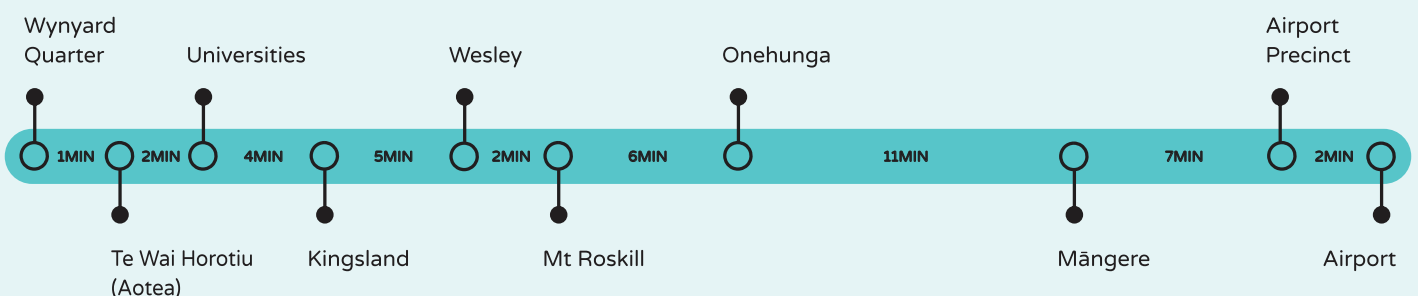
### Tunnelling half the route offers:

- Faster journey times (halved to most destinations)
- Double the capacity by being able to run more trains
- More frequent trains (every 5 minutes or less)
- More reliable journey times (separated from other traffic and signals)
- An underground base to connect future lines from the North Shore (Waitematā Connections project) and North West
- Seamless transfers between lines
- More people can live closer to light rail

## More time back in your day

Light Rail will dramatically reduce travel times and improve access to key employment and study destinations.

**Reliable travel times, and trains every 5 minutes (or less).**



\* Travel times are between stations

\* Stations and stop locations are indicative only and could change

**Rapid transit - Moving more people on safe, fast, reliable public transport**

Investing in high capacity, quality, rapid transit is critical to developing a modern, connected city. Driving housing and job growth, it is a catalyst for neighbourhood regeneration and people-friendly streets.

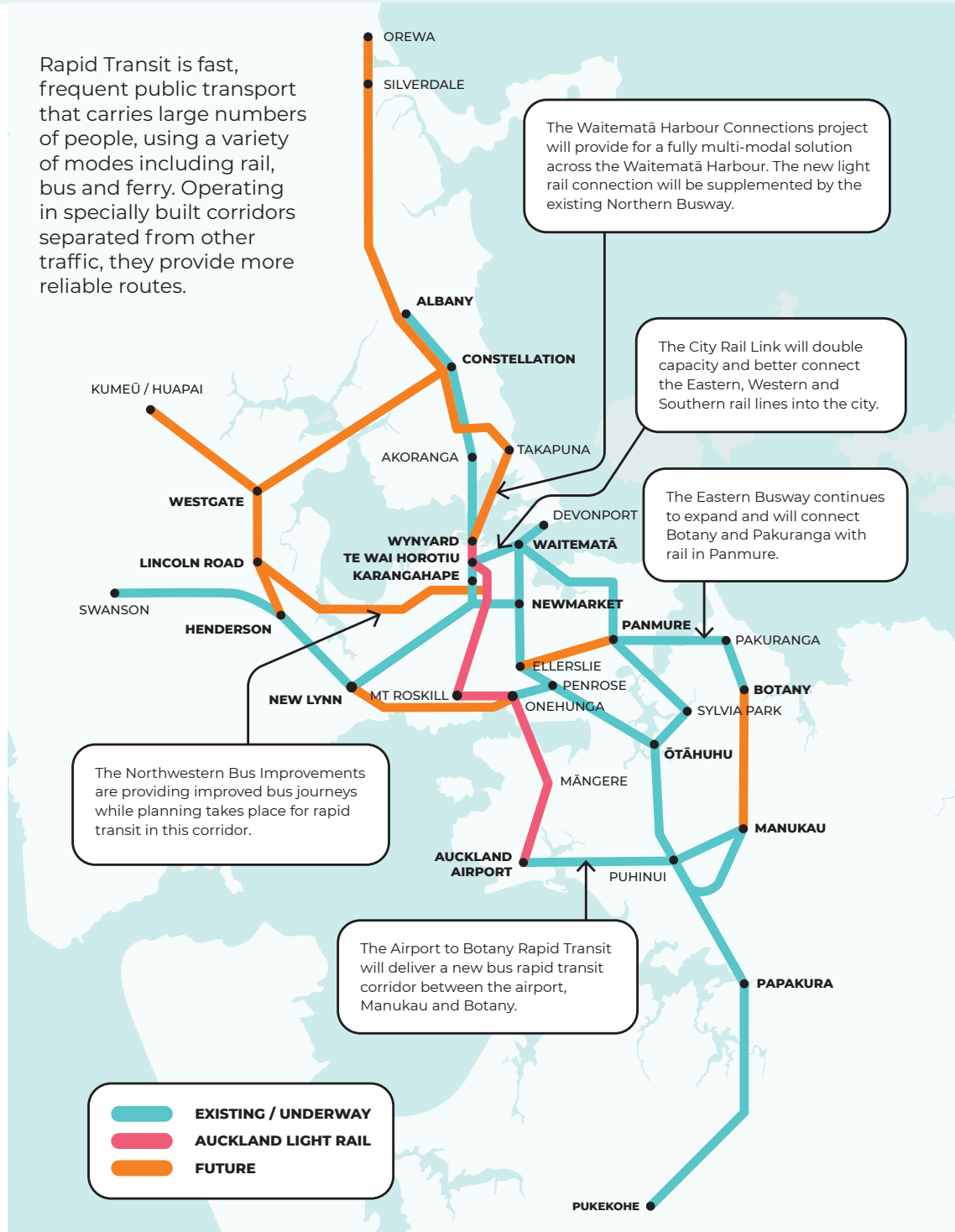
Auckland's Rapid Transit Network includes the rail network, the Northern Busway and the Eastern Busway. Rapid transit barely existed in Auckland 15 years ago, but has already proven highly successful with more than 26 million trips a year taken prior to COVID-19.

**A rapid transit network to make it easier and faster to get around all corners of Auckland**

Aucklanders deserve to have easy, reliable and efficient transport choices in the communities they live in. Having a dedicated, city wide rapid transit system gives you a genuine choice to travel congestion free with faster and more reliable journey times. This makes the wider Auckland area more connected, which ultimately helps redefine how and where we choose to live.

At the heart of all great cities is good access, mobility and connectivity – this gives people more opportunities to reach the places they want to study, work and spend time.

Rapid Transit is fast, frequent public transport that carries large numbers of people, using a variety of modes including rail, bus and ferry. Operating in specially built corridors separated from other traffic, they provide more reliable routes.



**Take the survey**

Tell us what you think and you could win a \$100 Hop card.  
[lightrail.co.nz](http://lightrail.co.nz) [info@lightrail.co.nz](mailto:info@lightrail.co.nz) 0800 567 847